

On a new species of *Rhinolophus* from Pondoland.

By LEWIS HENRY GOUGH, Ph.D.

Two skins of an apparently new species of *Rhinolophus* were found in a small collection of skins prepared by Mr. H. H. Swinny, Ngqeleni, District W. Pondoland, which I propose to describe under the name

Rhinolophus swinnyi, n. sp.

Size very small, not as large as the smallest yet known South African species of the genus.

Posterior upper praemolar separated from the canine, which is very large, anterior praemolar very small, in the tooth row, towards its outer side.

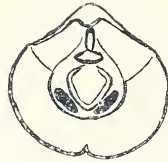


Fig. 1.

RHINOLOPHUS SWINNYI GOUGH.

Noseleaves, seen vertical to "horse-shoe," $\times 3$. The hairs on the noseleaves have been left out.



Fig. 2.

RHINOLOPHUS SWINNYI GOUGH.

Noseleaves from side. $\times 3$. The hairs on the noseleaves have been left out.

Horizontal portion of sella narrow, upper margin of the posterior connecting process rising above the sella, forming a marked projection, rounded terminally; sides of the vertical process of the sella parallel above, summit truncated with rounded off sides. Antitragal notch very shallow.

Horse shoe large, circular, its anterior margin notched in the centre; lancet moderate, its sides strongly concave, covered posteriorly with fur similar to that on the rest of the head, anteriorly somewhat less dense. Ears of medium size, the under edge convex in the distal half, then concave, convex again proximally, the concave portion very short. Tip sharply pointed, upper half of the outer margin concave,

antitragal notch very shallow, lobe strongly convex. Hind limbs slender. Wings from the ankle. Interfemoral membrane finely fringed posteriorly.

Fur close and fine, about 7 mm. long on the back. General colour mouse grey, lighter below, individual hairs ash grey with brown tips. Membranes dark brown or black, interfemoral membrane with a fringe of greyish hairs.

Dimensions of Type.

Forearm, 40 mm. ; " head and body, 42 mm. ;" " tail, 18 mm. ;" " ear, 18 mm. ;" noseleaf, 10·5 by 6·5 ; lower leg and foot, 25 mm. ; " foot, 8 mm."

The measurements in inverted commas were taken in the flesh by the collector.

Skull : Greatest length, 17 mm. ; basal length to front of canines, 14·2 mm. ; breadth of braincase, 6 mm. ; front of upper canine to back of m^3 , 6·4 mm. ; front of lower canine to back of m^3 , 6·8 mm. ; from palatal notch to front of incisors, 5·8 mm. ; width from the outside of m_3 , 6·5. Length of free portion of canine, 2·5 mm.

Type, adult male (dried skin), in the Transvaal Museum.

The co-type, also a male, is slightly larger ; forearm, 40·7 ; " head and body, 42 mm. ;" " tail, 19 mm. ;" " hindfoot, 8 mm. ;" " ear, 18 mm."